

Runwal Meadows MahaRERA Registration No.
Aster - PR1181012502789
Daisy - PR1181012502740
Available on www.maharera.mahaonline.gov.in



Site Address: Runwal Meadows, Runwal City Centre, Kanjurmarg (E), Mumbai 400 042.
Corporate Office: Runwal & Omkar Esquare, 4th Floor, Off. Eastern Express Highway, Sion (E), Mumbai 400 022.

www.runwalenterprises.com

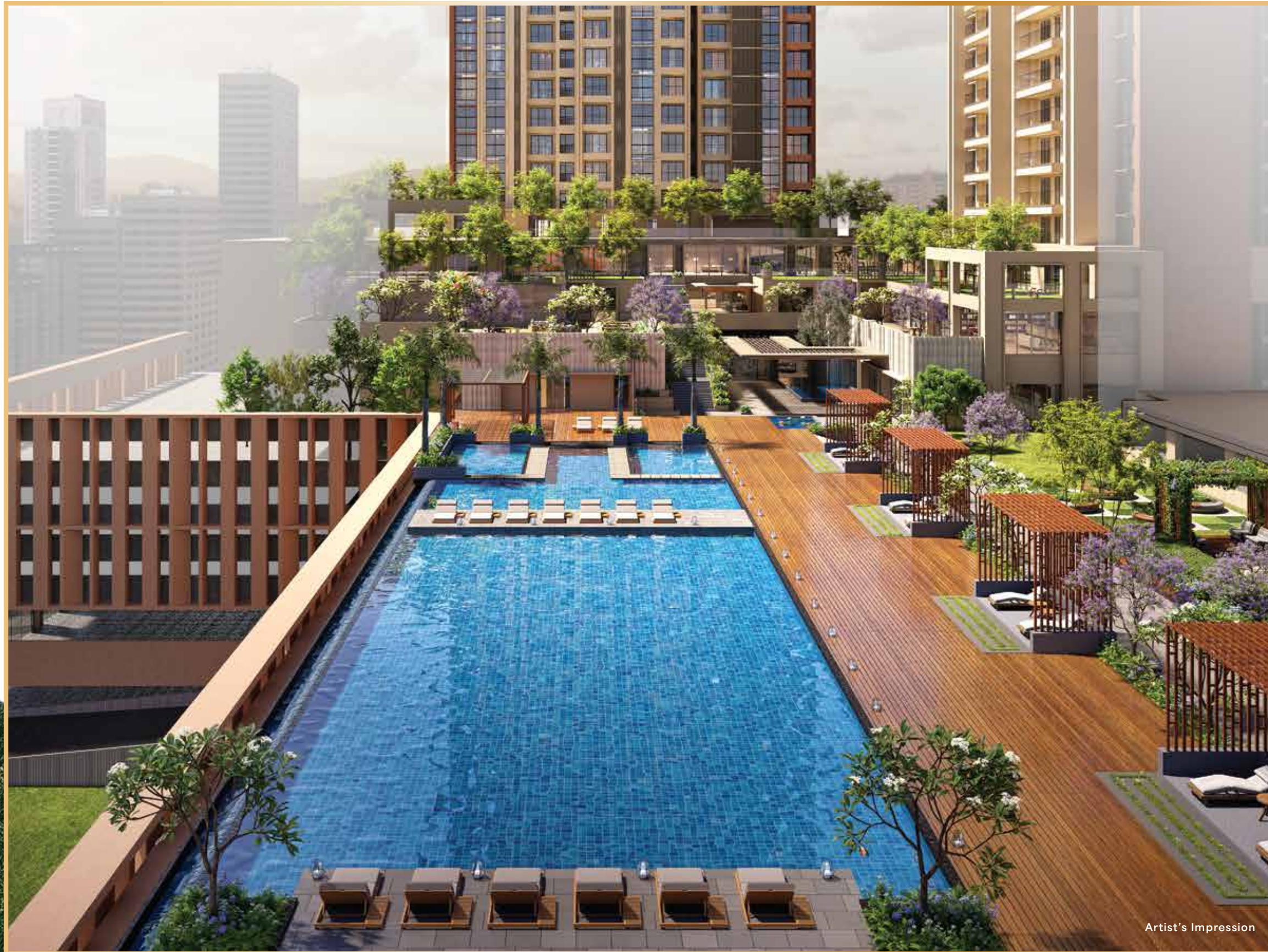


A life shaped for every day.

A new landmark rises in Kanjurmarg, born of Runwal Enterprises' legacy of vision and craftsmanship. Here, modern living unfolds beside expansive greens, where mornings breathe lighter and evenings slow to the rhythm of the trees.

Runwal Meadows is where refinement meets renewal, a place that redefines what it means to come home in Mumbai.





Artist's Impression

R RUNWAL
MEADOWS
KANJURMARG EAST

A new leaf in Mumbai's legacy.

A thoughtfully planned residential address where nature, space and everyday conveniences come together to create a life of luxury. Expansive greens, curated amenities and well-designed homes offer a lifestyle that feels calm yet connected. Centrally located in Kanjurmarg and seamlessly connected across Mumbai.

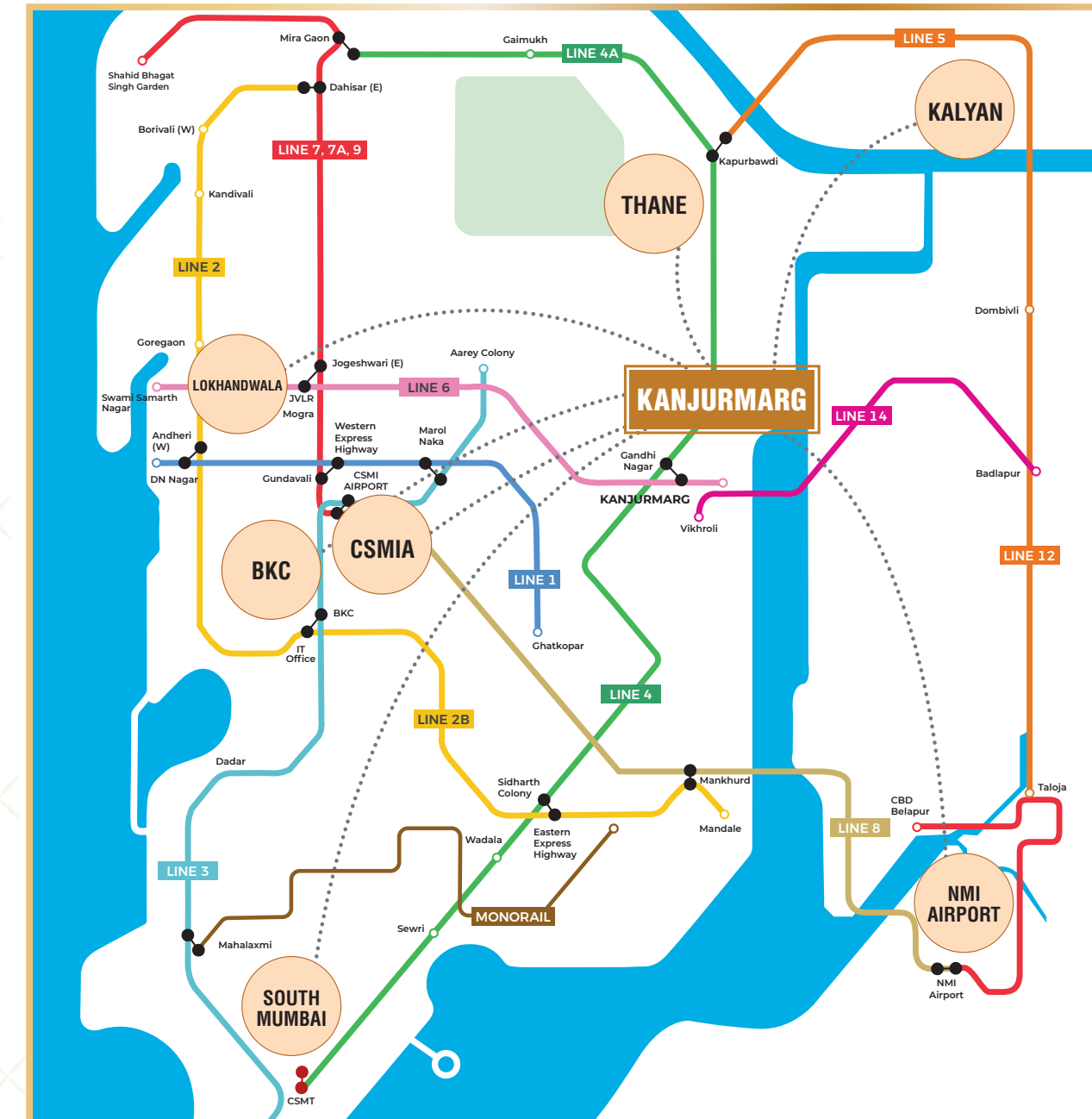
The amenities/details/specifications shown/mentioned are for reference purpose only and subject to change as may be necessary. The furniture, fixtures, artefacts, equipment and fittings are not part of the standard actual product offerings. The allottee must refer to the agreement for sale for actual details.

Minutes from everything, miles from chaos.



This map is not according to scale. It is meant only for reference purposes, to give a broad idea of the locality. For any specific map related requirement, please refer to verified published maps in the public domain. Metro line placements are approximate.

360 degree connectivity with multiple metro routes



All distances and locations are approximate.

Excellent Rail Connectivity

Kanjurmarg Station 300 mtrs.
Amrit Bharat station with seamless access to Thane, Dombivli, Kalyan, Vikhroli, Dadar and CSMT, plus interchange to Western and Harbour lines. Approx. 45-60 mins to key hubs.

Bhandup Station 800 mtrs.
Additional rail access with similar citywide connectivity.

Multi-line Metro Access

Metro Line 6 900 mtrs.
Swami Samarth Nagar to Vikhroli, linking Powai, SEEPZ, Jogeshwari and Andheri-Lokhandwala. Approx. 35 mins.

Metro Line 4 1 km
Wadala to Kasarvadavali, connecting Thane, Powai, Vikhroli and Ghatkopar. Approx. 30 mins.

Metro Line 14 1 km
Kanjurmarg to Badlapur, with access to Dombivli, Ambarnath and Badlapur. Approx. 45-60 mins.

Enhanced Road Connectivity

JVLR 900 mtrs.
Eastern Express Highway 1.5 kms
Elevated Eastern Freeway Extension (Connecting South Mumbai) 1.5 kms
LBS Road 1.5 kms
Eastern Freeway 9.5 kms
SCLR 10 kms
Western Express Highway 11 kms



Actual Image Of 5+ Acres of Central Park

At the heart of green living.

Runwal Meadows spans a 8-acre land parcel overlooking a 5+ acre Central Park, a lush expanse where nature takes centre stage. Wide lawns, shaded boulevards and quiet corners create a living ecosystem that renews every day.

From the homes above, balconies open to calming views of these expansive greens.

View from select apartments/towers. The Developer makes no representations regarding the existence/continuity of the view shown herein.



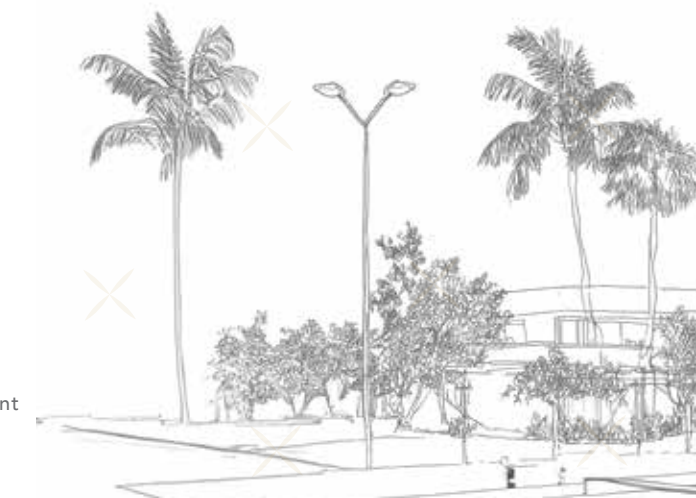


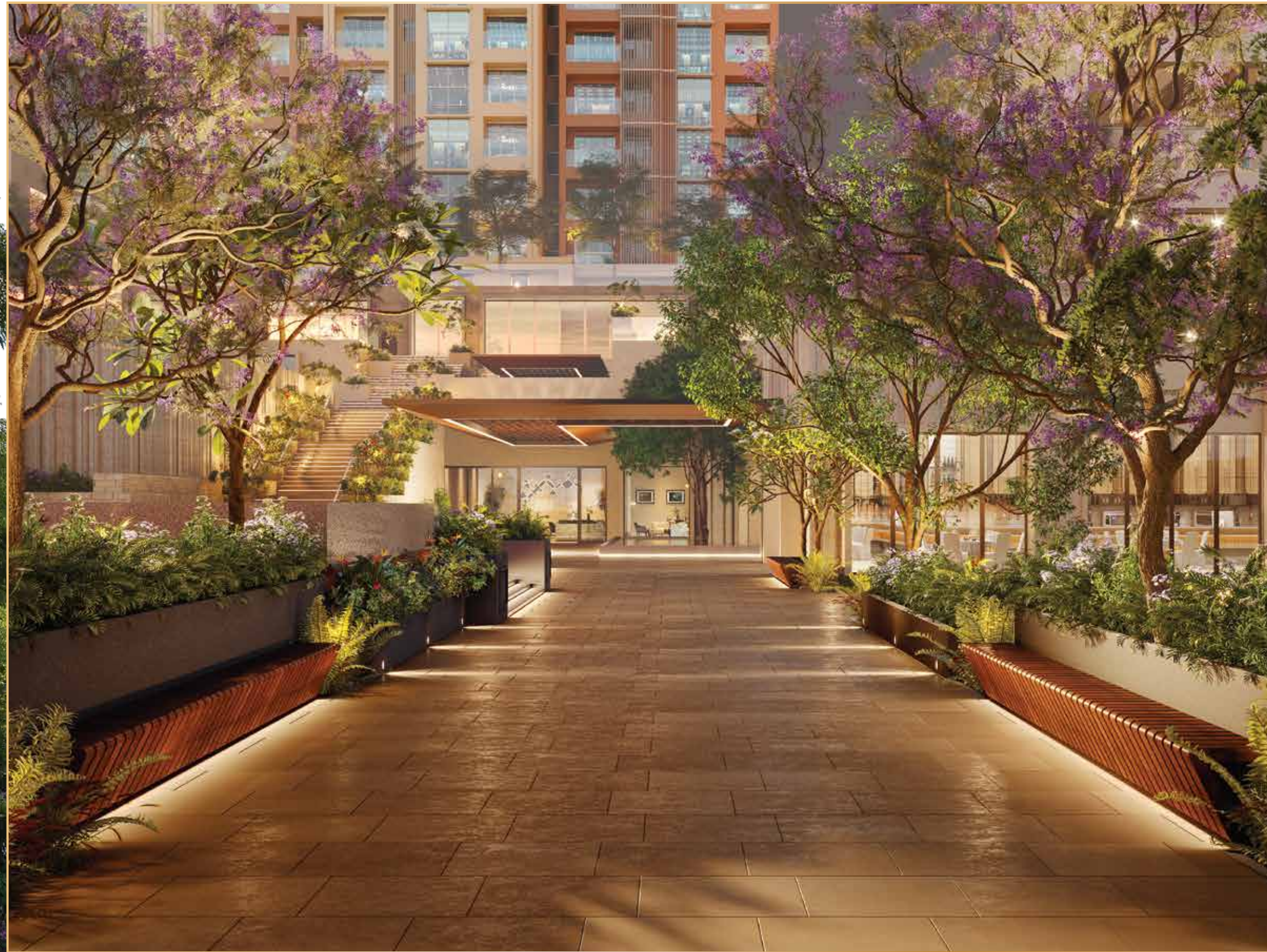
Where every day finds its calm.

Step into 2,00,000 sq. ft. of thoughtfully curated amenities, among the most expansive lifestyle offerings in the Eastern Suburbs.

At its heart lies a vibrant clubhouse, one of the largest in the city, complemented by courts, a gym, yoga and pilates studios, a banquet hall, mini theatre and guest suites. Outdoors, pools, landscaped spaces and wellness zones bring leisure, community and everyday calm together.

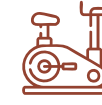
The amenities/details/specifications shown/mentioned are for reference purpose only and subject to change as may be necessary. The furniture, fixtures, artefacts, equipment and fittings are not part of the standard actual product offerings. The allottee must refer to the agreement for sale for actual details.





2,00,000 sq. ft. Of amenities

Wellness & Fitness



Fully Equipped
Gymnasium



Yoga & Pilates Studios



Indoor Sports
Courts



Walking & Jogging
Tracks



Aqua Gym

Leisure & Recreation



Swimming Pool
& Kids' Pool



Banquet Hall



Mini Theatre



Library



Indoor Games
Room



Guest suites

Community & Convenience



Landscaped
podium

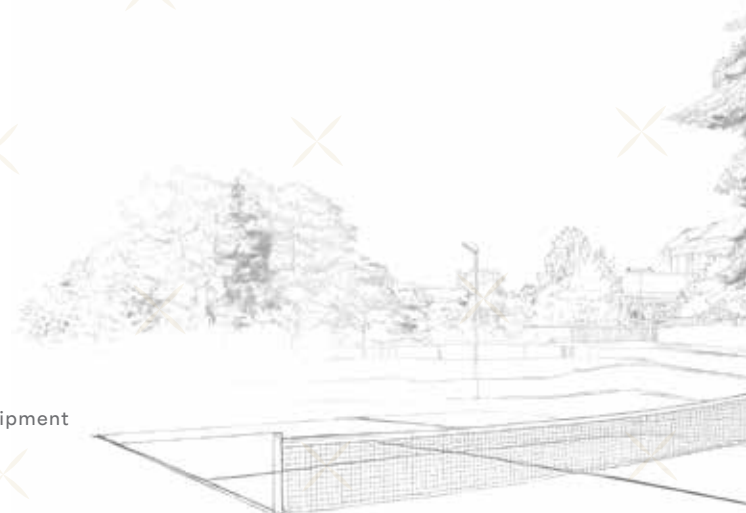


Kids' Outdoor
Play Area



Sit-outs
& Gathering Zones

The amenities/details/specifications shown/mentioned are for reference purpose only and subject to change as may be necessary. The furniture, fixtures, artefacts, equipment and fittings are not part of the standard actual product offerings. The allottee must refer to the agreement for sale for actual details.



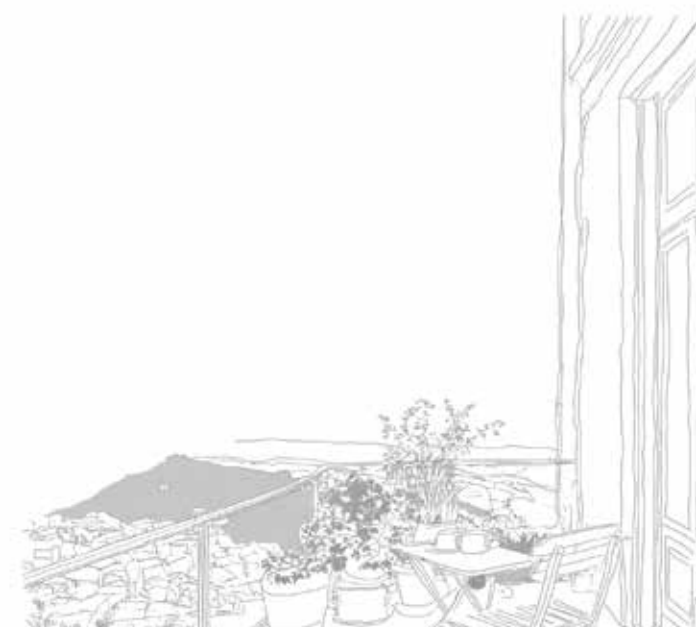


Homes that breathe life.

Every residence balances space, light and perspective. Thoughtful layouts create rooms that feel expansive yet intimate, with lavish 2, 3, & 4 bed residences with private decks that extend living into the skyline and gardens beyond.

Superior finishes and efficient planning ensure each home is a sanctuary where modern elegance meets everyday ease.

The amenities/details/specifications shown/mentioned are for reference purposes only and are subject to change as may be necessary. The furniture, fixtures, artefacts, equipment and fittings are not part of the standard/actual product offerings. The allottee must refer to the agreement for sale for actual details.





Actual view of Vihar lake from higher floors.

View from select apartments / towers on higher floors. The Developer makes no representations regarding existence/continuity of the view shown herein.

A view that takes your breath away.

The towers rise with intent, opening to light, sky and sweeping views. From upper floors, the city meets the endless canopy of greens. From lower terraces, the park unfolds like a private horizon.

Every sunrise, every skyline moment becomes a reminder of space, clarity and quiet luxury.





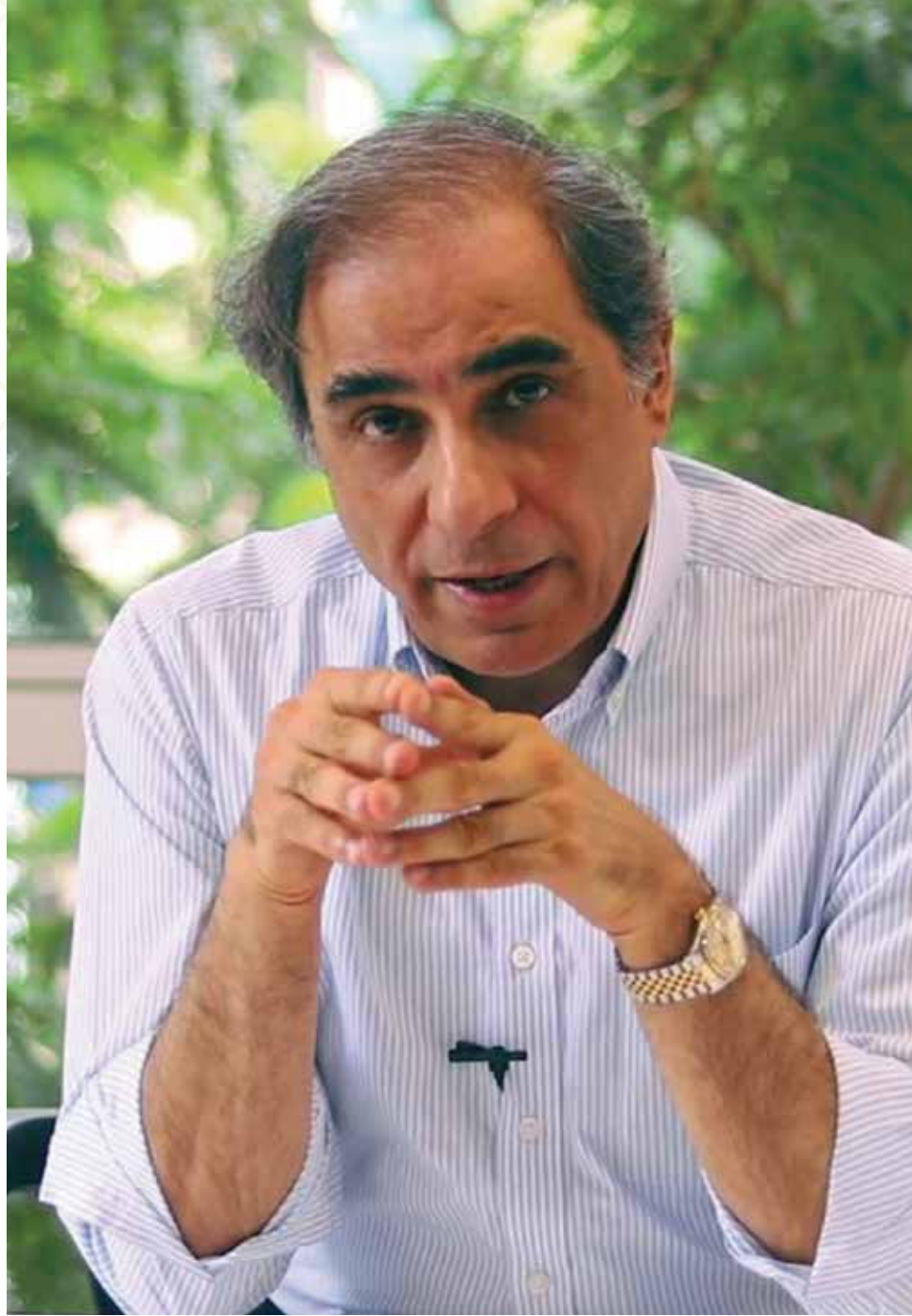
Stock Image.

A sacred pause.

Within the community, serene temples offer a space for reflection and gratitude. A quiet spiritual anchor amidst vibrant living, it brings balance to everyday life.



The amenities/details/specifications shown/mentioned are for reference purpose only and subject to change as may be necessary. The furniture, fixtures, artefacts, equipment, and fittings are not part of the standard actual product offerings. The allottee must refer to the agreement for sale for actual details.



Hafeez Contractor

Design Architect, Padma Bhushan Awardee



Hiranandani Township



Imperial Edge



23 Dubai Marina



Mahimtura (India)

Structural Consultant

Crafted by visionaries.

Runwal Meadows is envisioned and crafted by leading specialised consultants across architecture, landscape, engineering and design. Their collective expertise shapes a refined development designed to endure.

Led by Hafeez Contractor, a Padma Bhushan awardee and one of India's most distinguished architects, the development reflects a legacy of design excellence.





Where your home is built by a legacy.

From Kanjurmag's 36-acre township Runwal City Center to Mulund's iconic Runwal Greens and Dombivli's game-changing 250-acre township Runwal Garden City, Runwal Enterprises has consistently transformed the way Mumbai lives. With the 7 Mahalaxmi, an ultra-luxury address in South Mumbai, Runwal Enterprises continues its legacy of creating destinations that do not just add to Mumbai. They define it.

With years of distinguished excellence, Runwal Enterprises has been a driving force in shaping the residential landscape of the Mumbai Metropolitan Region (MMR). With a portfolio of over 10,000 units and ~57 million square feet of developments, including two integrated townships, we are pioneers in crafting premium communities that seamlessly blend modern luxury, nature, and holistic living.

Stock Image.



RUNWAL ENTERPRISES
A SUBODH RUNWAL GROUP

~57
MSF
Developments

2
Integrated
Townships

10,000+
Units Developed



This map is not according to scale. It is meant only for reference purposes, to give a broad idea of the locality. For any specific map related requirement, please refer to verified published maps in the public domain. metro line placements are approximate.

OUR PRESENCE IN MUMBAI

- | | | |
|-----|--------------------|-------------------|
| 1. | 7 Mahalaxmi | (Mahalaxmi) |
| 2. | Runwal Forests | (Kanjurmarg West) |
| 3. | Runwal Bliss | (Kanjurmarg East) |
| 4. | Runwal Avenue | (Kanjurmarg East) |
| 5. | Fifth Avenue | (Kanjurmarg East) |
| 6. | Runwal Commerz | (Kanjurmarg East) |
| 7. | Runwal Greens | (Mulund West) |
| 8. | R Galleria | (Mulund West) |
| 9. | Runwal Pinnacle | (Mulund West) |
| 10. | Runwal Chestnut | (Mulund West) |
| 11. | Runwal Garden City | (Dombivli East) |
| 12. | R Galleria | Dombivli East) |
| 13. | Runwal Edge | (Dombivli East) |
| 14. | R Mall | (Dombivli East) |
| 15. | Runwal Woods | (Chembur East) |
| 16. | Runwal BKC | (BKC Annex) |

RESIDENTIAL
 RETAIL / MALL
 OFFICE